

GEAR DESIGN & INSPECTION SERVICES

BY DIEHL ENGINEERING



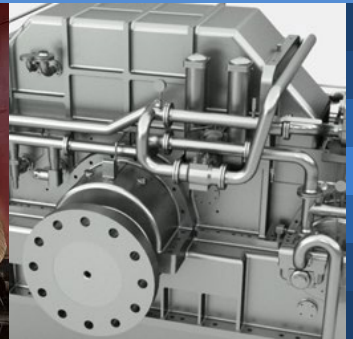
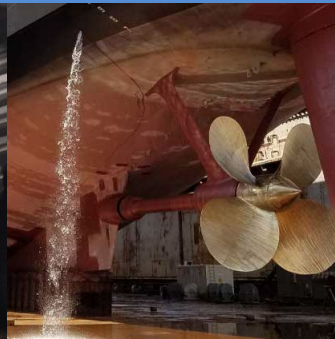
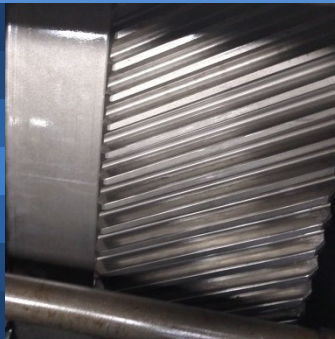
GEAR DESIGN REVIEW

GEAR INSPECTION SERVICES

GEAR SPECIFICATION

FAILURE PREVENTION

REPAIR ANALYSIS



Gear Design and Inspection Services

When a critical gear fails in service, the financial loss can be substantial, due not only to the cost of repair, but also to the loss of revenue caused by the outage.

Diehl Engineering Company provides a full range of gear-related engineering services intended to minimize losses to our customers.

Our gear-related engineering services include:

- Gear Design and Specification
- Gear Failure Prevention
- Gear Repair Analysis



DIEHL
ENGINEERING
COMPANY

Gear Design and Specification

Diehl Engineering Company will assist during the planning, purchase and installation stages of new gears to minimize gear failure risk and the resulting financial loss.

We provide preliminary gear design, provide tooth geometry specifications for the manufacture and purchase of new gears, evaluate proposals, review vendors' designs, inspect finished parts, witness accuracy checks and factory tests, review inspection data, supervise the installation, and attend the start-up.

Gear Failure Prevention

Typically, a gear set in distress will begin to show signs of trouble long before a critical failure occurs. During this time, corrective measures can be taken that will significantly prolong gear life.

We will inspect and document gear condition as found in service, set up a program to monitor the condition over time, and make detailed, practical recommendations on ways to correct any adverse conditions in order to extend gear life.

Gear Repair Analysis

Diehl Engineering Company will minimize financial losses if a gear does fail in service. We will inspect and photograph the failed parts, determine why the gear failed and what can be done to prevent future failure, assist in achieving timely and economical repairs, and provide a clear and concise report to aid in the recovery of losses due to the failure.

Often, we can shorten the turnaround of failed gears from months to days by providing the technical expertise needed to manufacture or repair gears locally.

Contact Us Today!

If you have questions or would like to learn more about our services, contact us by telephone or email and one of our engineers will be happy to discuss your project, and how we can help you.



TEL: (+1) 360-297-8781

EMAIL: info@diehlengineering.com

WEB: www.diehlengineering.com

MAIL: P.O. Box 1573, 26076 Iowa Avenue, Kingston, Washington 98346 USA